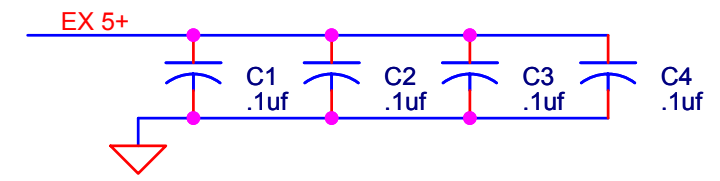
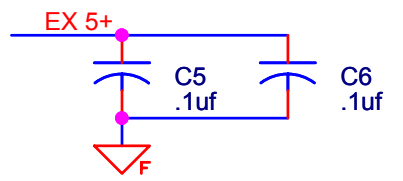
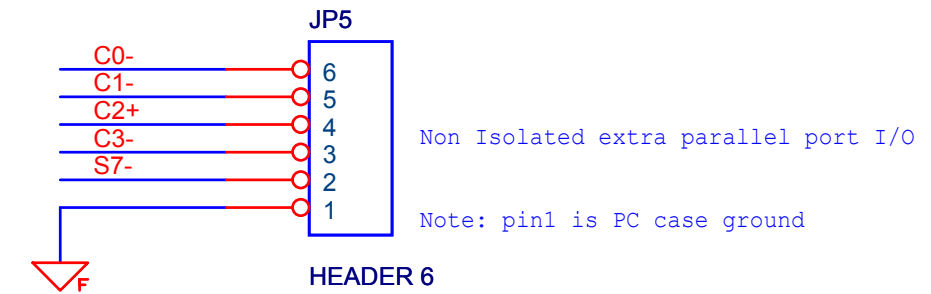
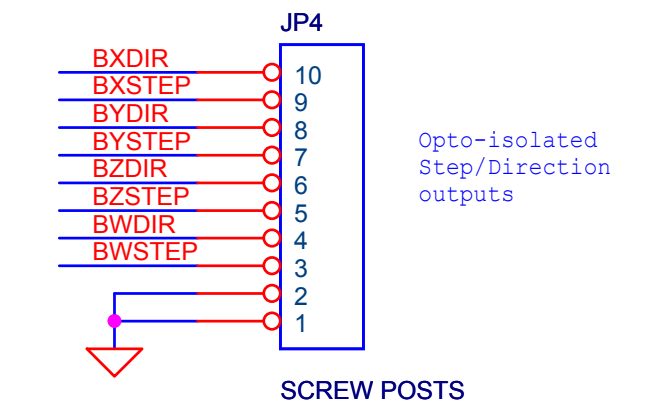
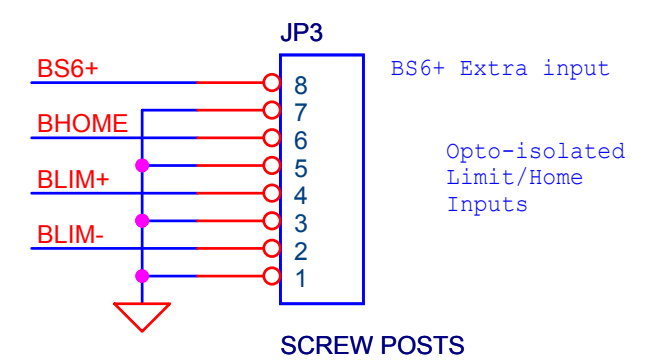
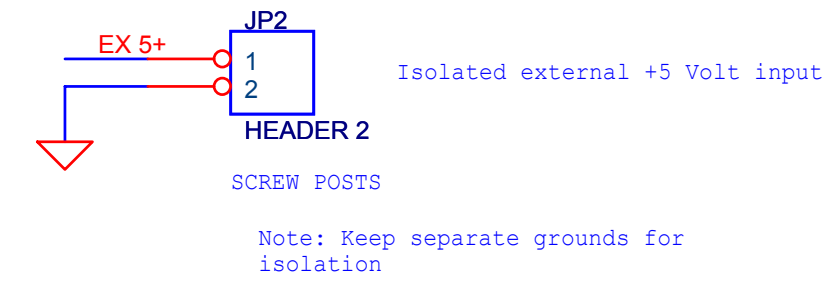
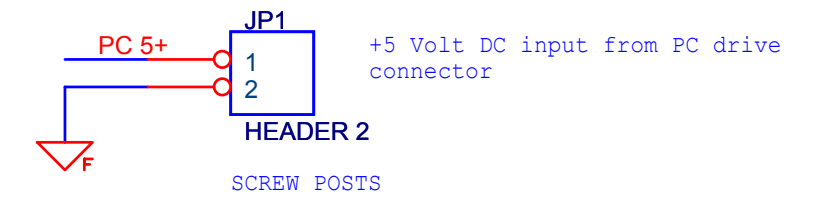
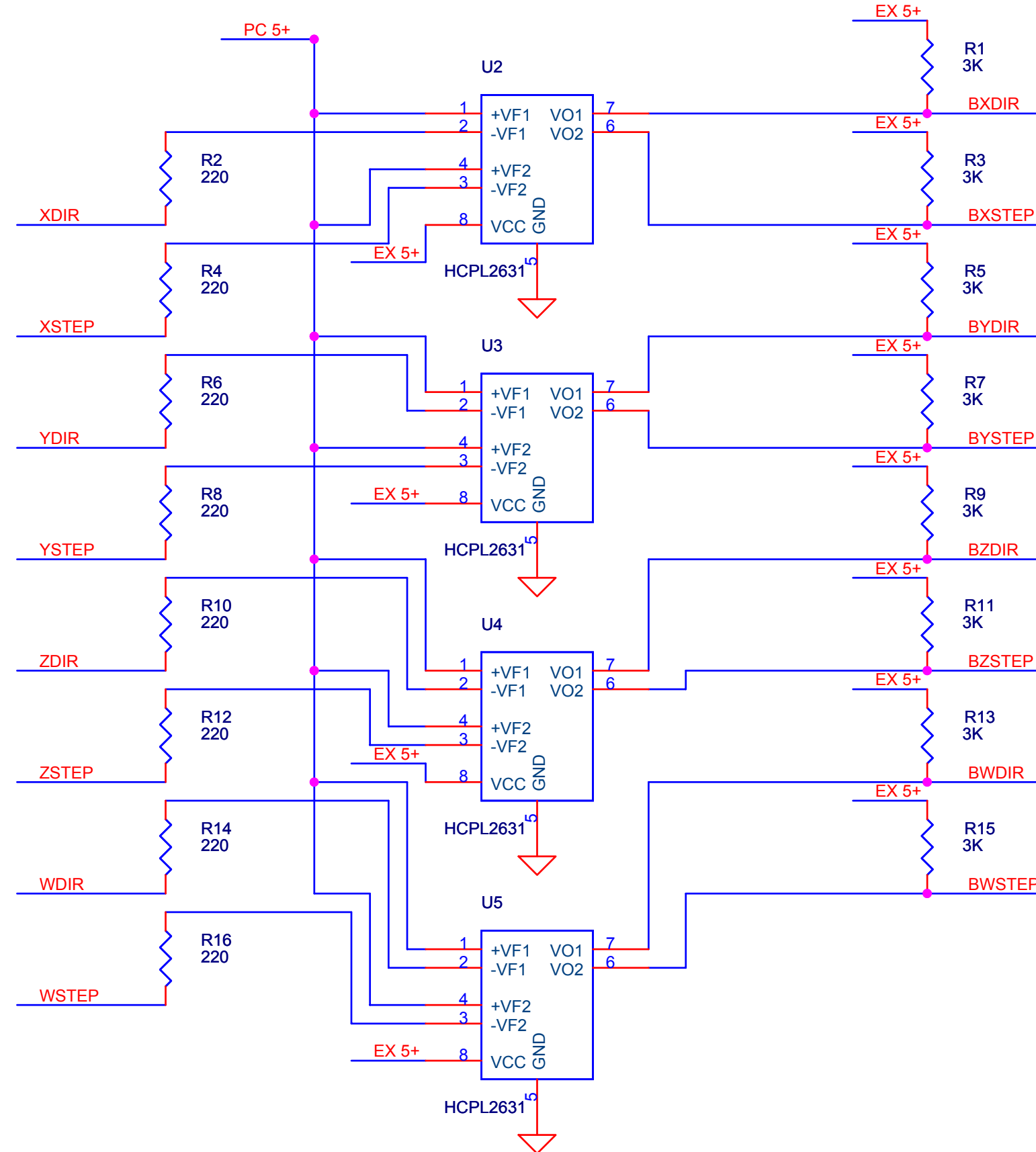
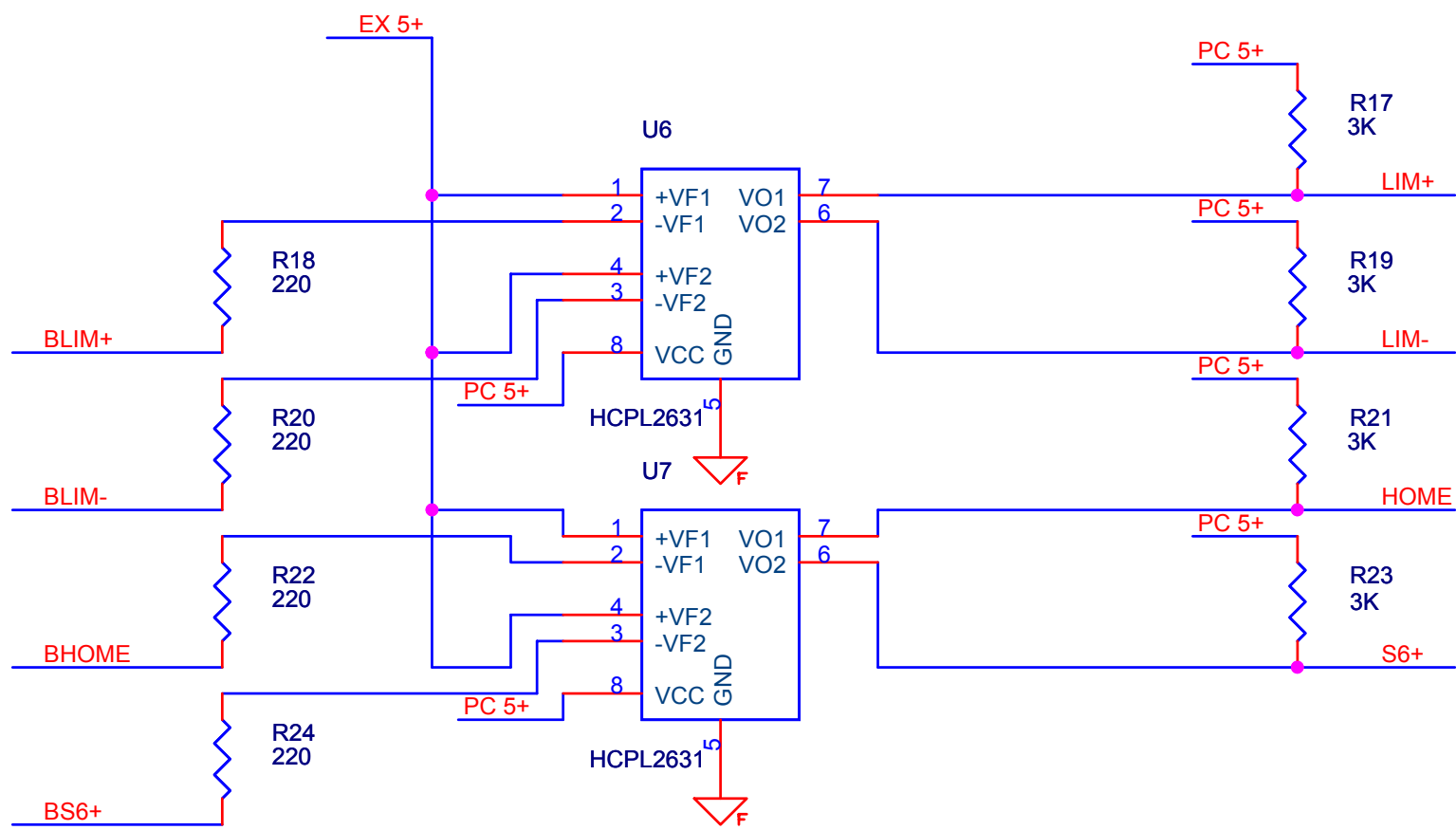


OLD PRINTER REFERENCE NOTES:

```

=> OUT C0- Set Low pulse > 0.5 us to send
=> OUT C1- Set Low to autofeed one line
=> OUT
=< IN S3+ Low for Error/Offline/PaperEnd
=> OUT -Init C2+ Set Low pulse > 50us to init
=> OUT C3- Set Low to select printer
=> OUT
=> OUT
=> OUT
=> OUT
=< IN S6+ IRQ Low Pulse ~ 5 uS, after accept
=< IN S7- High for Busy/Offline/Error
=< IN S5+ High for out of paper
=< IN S4+ High for printer selected

```



Embedded Acquisition Systems  
 2571 Cobden Dr.  
 Sterling Heights, MI 48310  
 WEB <http://www.embeddedtronics.com>  
 EMAIL [sales@embeddedtronics.com](mailto:sales@embeddedtronics.com)  
 Copyright 2006

Title		
Opto Breakout Board		
Size	Document Number	Rev
B	Opto Breakout	E
Date:	Wednesday, September 06, 2006	Sheet 1 of 1