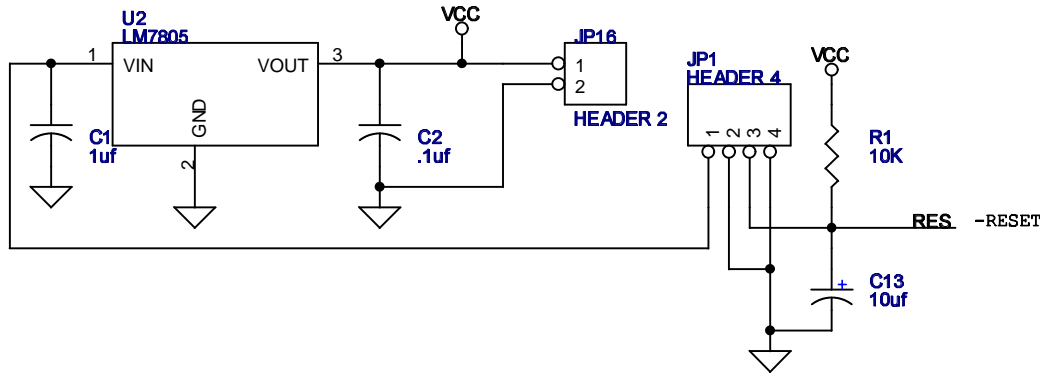
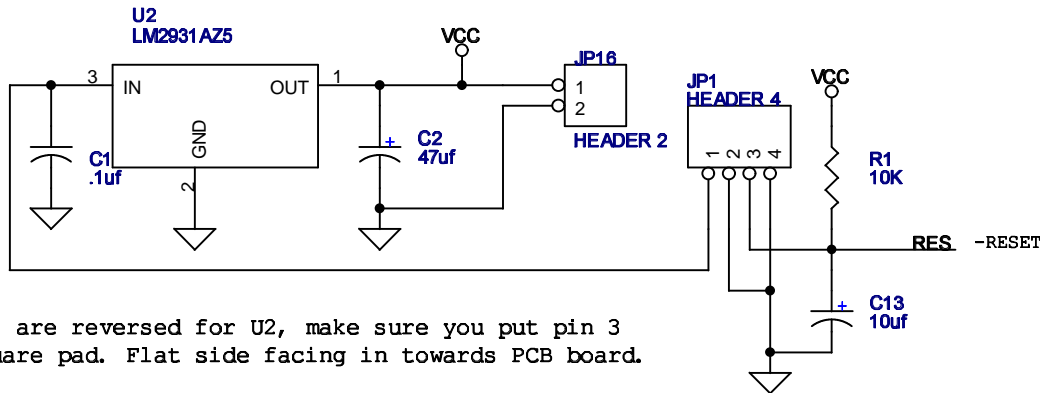


This circuit modification is for low power uses, such as Solar cell and 4 cell battery operations.

Original Circuit



Modified Low Drop-out
Circuit, 100ma max load.



Note: pins are reversed for U2, make sure you put pin 3 on the square pad. Flat side facing in towards PCB board.

U2, C1 and C2 are changed to allow Finger Board to run from 4.8 volts to 26 volts.

Title		
Low drop out regulator replacement		
Size	Document Number	Rev
A	{Doc}	{RevCode}
Date:	Wednesday, December 10, 1997	Sheet 1 of 1